

Shipping batteries safely and compliantly requires proper packaging.

For many batteries, a piece of clear tape covering the terminals is enough to prevent the battery from causing a fire in transit.

In special cases, the battery may be damaged and require further specialized packaging for transportation.

## Requires Terminal Protection/Taping

Clear Tape only

Do not use dark tape or plastic bags

Any tech assembly removed from a power tool must also be taped even if individual cells are under 9 volts

### Over 9 Volts

Nickel-Cadmium



Nickel-Metal Hydride  
(This tech assembly is also an example of batteries that need tape)

Lithium-Ion



Lead Acid



Lithium & Lithium-ion with exposed terminals



Batteries with cracked casing or exposed terminals



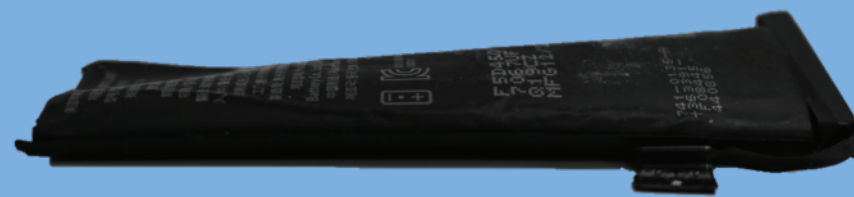
## Damaged Defective or Recalled (DDR) Lithium-ion

Bloated

More than Surface Damage



Subtle Bloating



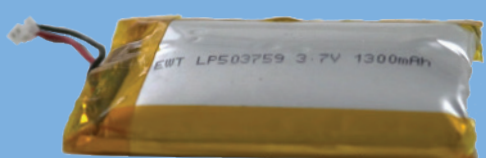
Warped Cell



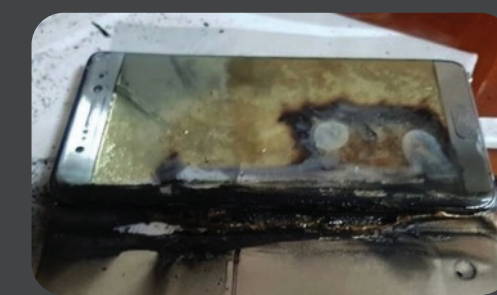
Multiple Bloated Cells



Case appears cracked due to unseen bloated cells



Single Bloated Cell



Any of these batteries are potentially hazardous and need special packaging for safe handling and transport

## Coin Cell Types

Button/Coin Cell Battery Type

Common Model Number Prefixes

Examples

Silver Oxide

SR, S, SG



Lithium

CR, LIR, BR, ML



Alkaline

L, LR, AG



Zinc Air

A, AC, AZ, only a (+), color tab



Don't

Mix Lithium or Silver Oxide with other chemistries

**WILL NOT BE PAID FOR SILVER OXIDE**

Do

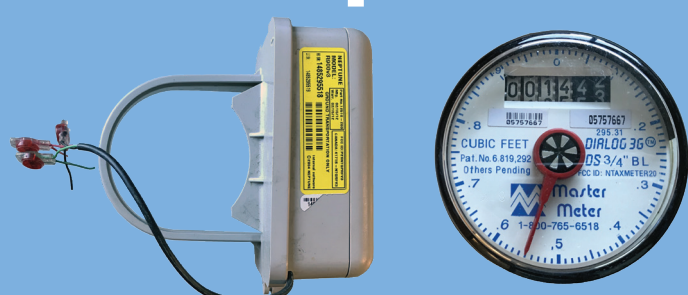
Fully cover Lithium terminals

Separate chemistries

Only Lithium coin cells need to be taped



## Transponders



Contain lithium primary batteries  
Do not need to be taped

For more information, reference BATTERY RECYCLING GUIDE for Batteries Plus and Batteries Plus Bulbs stores in the UNITED STATES

Contact Battery Solutions for electric vehicle battery recycling information

If you need help identifying a battery, please call 800-852-8127

or email pictures to

customerservice@batterysolutions.com